

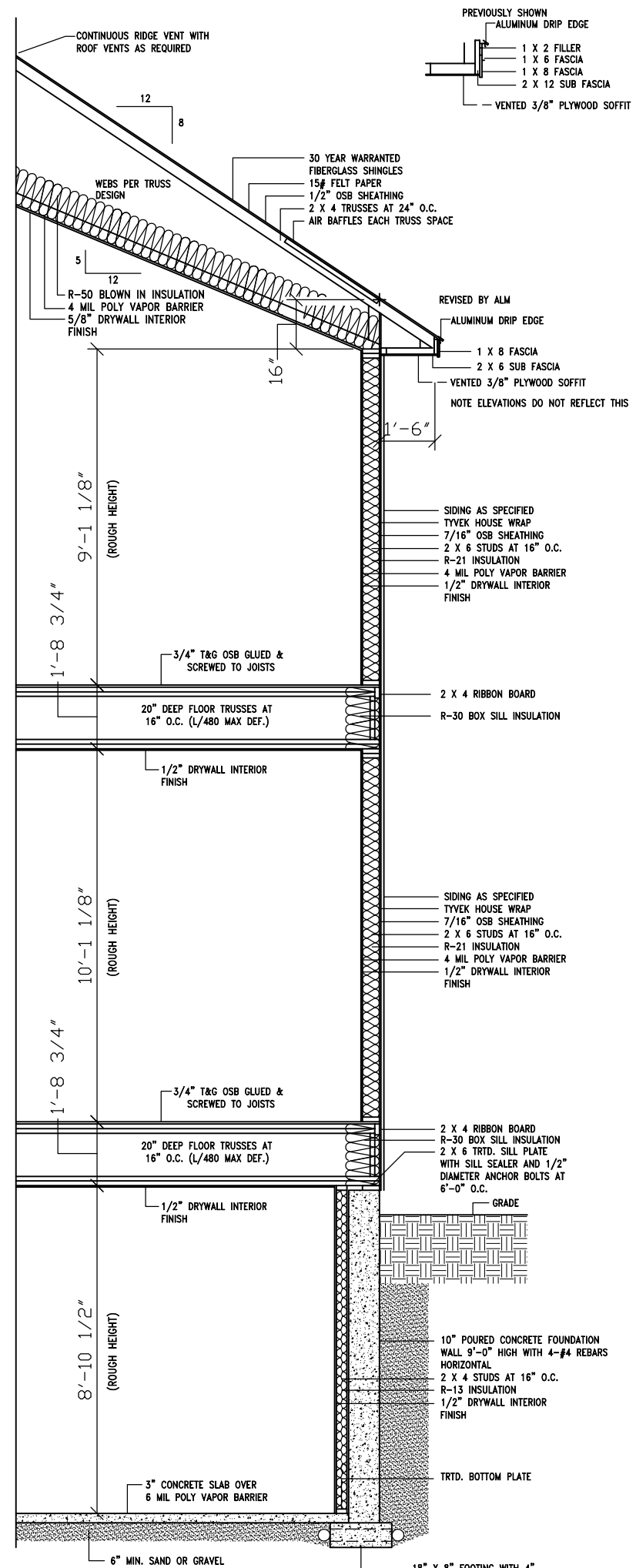
BAR AREA (BACK BAR ELEVATION)
SCALE: 1/4"=1'-0"



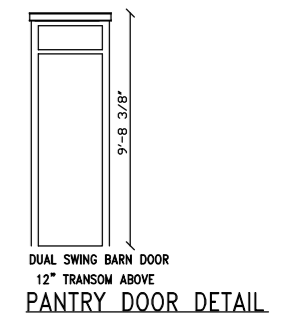
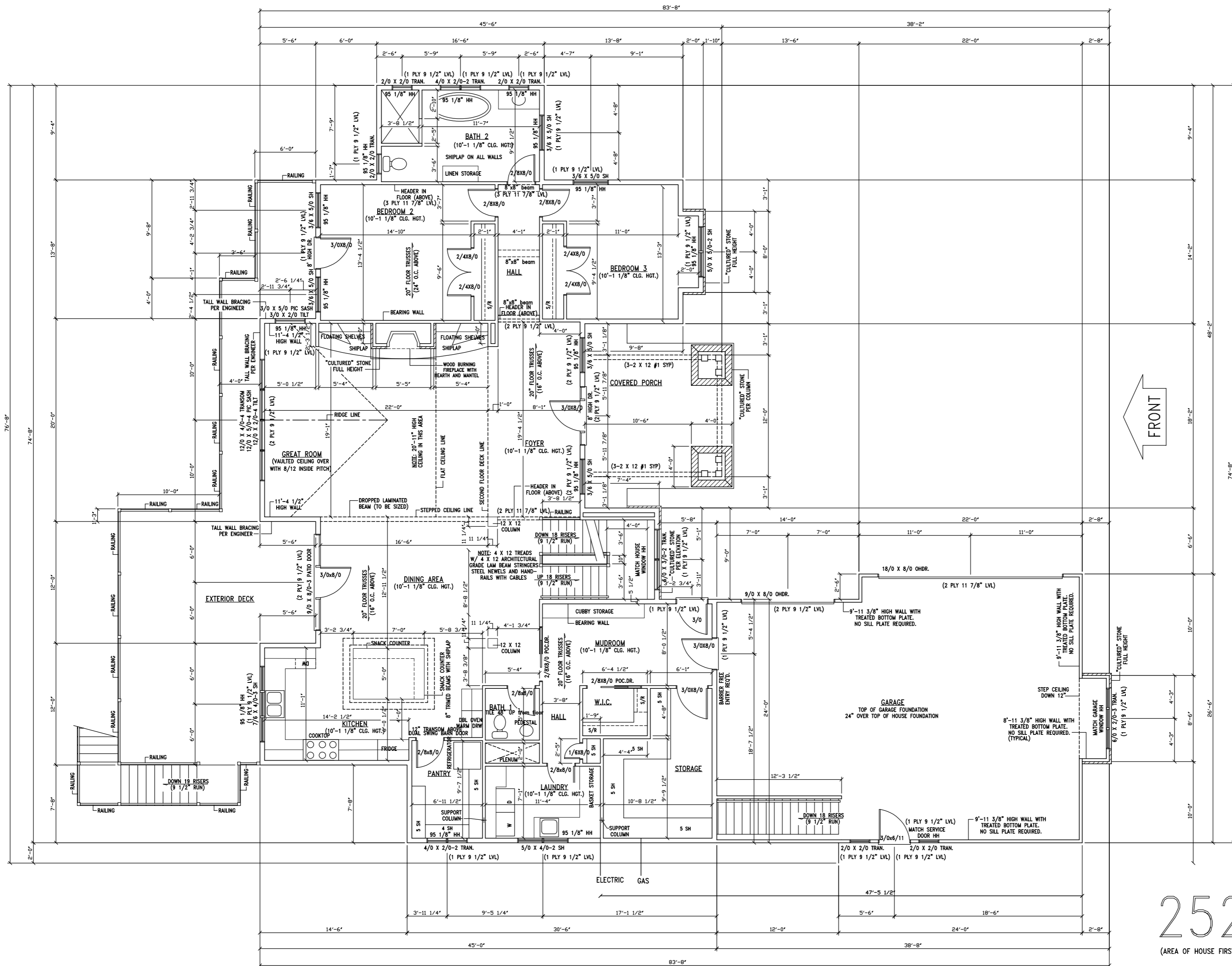
1138 SF

(AREA OF FINISHED LOWER LEVEL FLOOR ONLY, DOES NOT INCLUDE GARAGE, UNFINISHED AREAS AND STAIRWELLS)

NOTE: ALL LVL HEADERS AND BEAMS ARE 3100/2.0 VERSA LAM



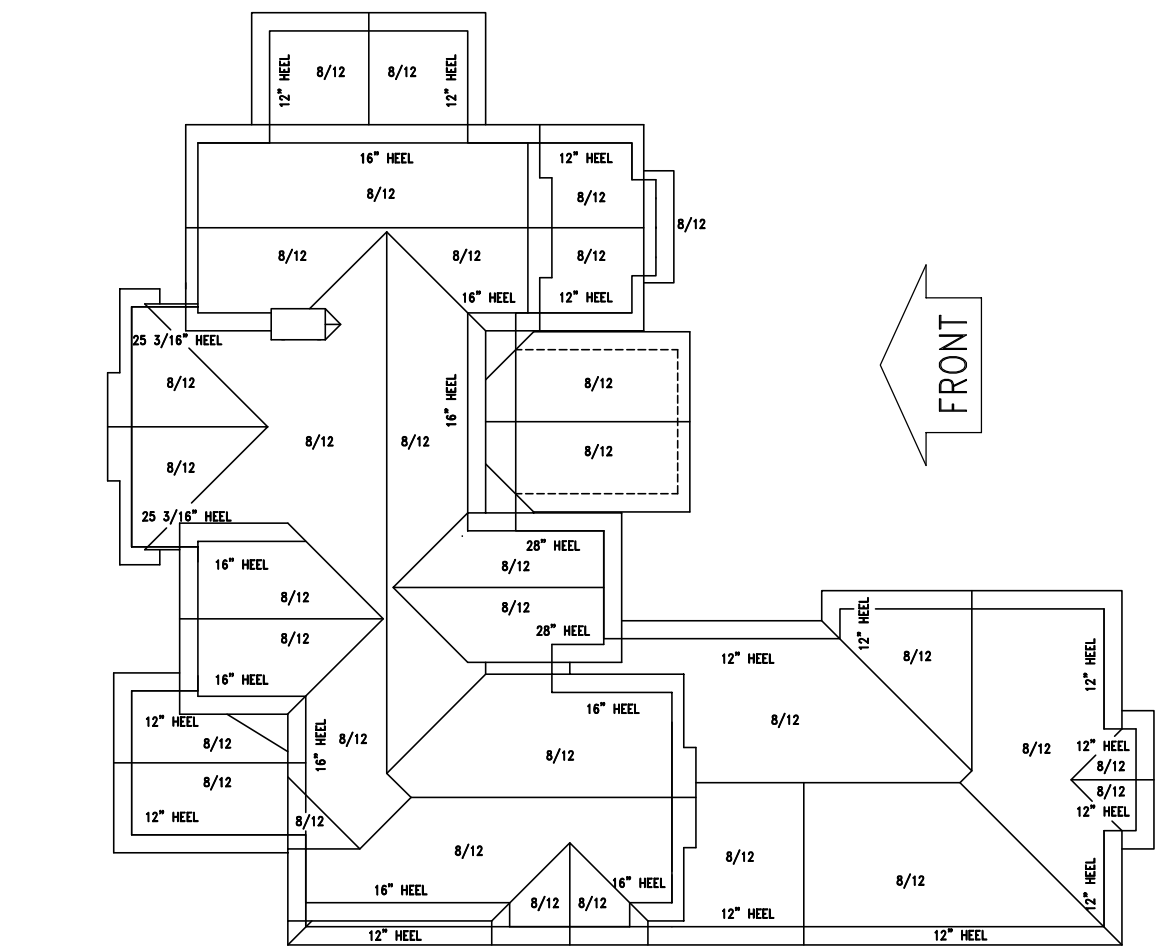
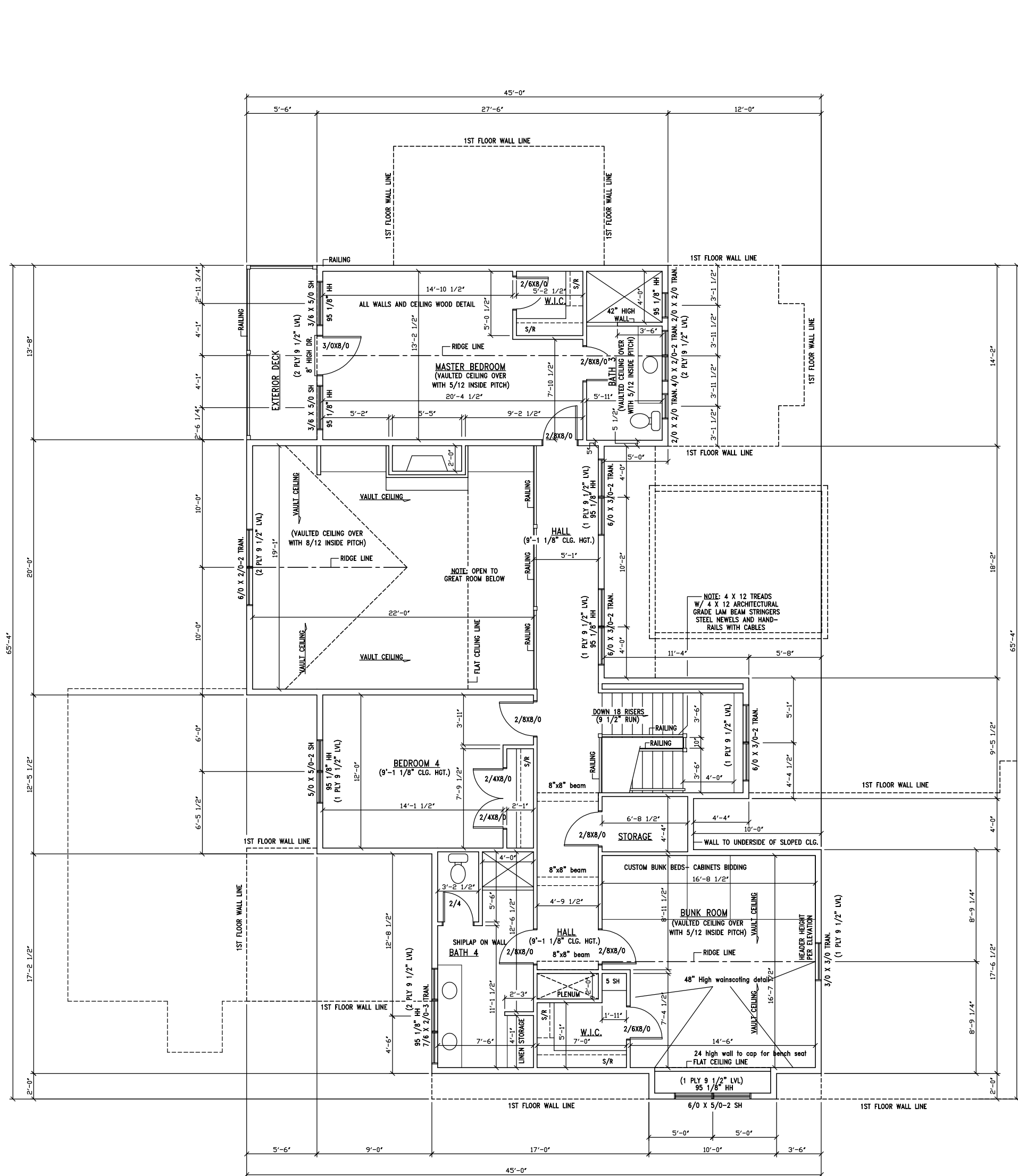
TYPICAL SECTION
SCALE 3/8"=1'-0"



- GENERAL INFORMATION:**
- 1) ALL DIMENSIONS ARE TO STUD FRAMING.
 - 2) EXTERIOR HOUSE WALLS ARE 2 X 6 (5 1/2" WIDE) AT 16" O.C. 10'-1 1/8" WALL HEIGHT AT FIRST FLOOR. 9'-1 1/8" WALL HEIGHT AT SECOND FLOOR. SPECIAL HEIGHT WALLS WHERE SHOWN.
 - 3) INTERIOR WALLS ARE 2 X 4 (3 1/2" WIDE) AT 16" O.C. 10'-1 1/8" WALLS AT FIRST FLOOR. 9'-1 1/8" WALL HEIGHT AT SECOND FLOOR. 2 X 6 WALLS (5 1/2" WIDE) WHERE SHOWN.
 - 4) GARAGE WALLS ARE 2 X 4 (3 1/2" WIDE) AT 16" O.C. 9'-11 3/8" WALL HEIGHT. TREATED BOTTOM PLATE REQUIRED.
 - 5) FLOORS ARE 20" DEEP FLOOR TRUSSES AT 16" O.C. WITH 3/4" T&G OSB SHEATHING GLUED AND SCREWED TO TRUSSES. L/480 MAXIMUM DEFLECTION.
 - 6) VAULTED CEILING OVER GREAT ROOM, MASTER BEDROOM, BUNKROOM, BATH 2 AND 3. REMAINDER OF CEILING IS FLAT.
 - 7) WINDOW CALLOUTS ARE GENERIC. VINYL SINGLEHUNG AND TRANSOMS WITH LOW E ARGON FILLED GLASS AND SCREENS.
 - 8) EXTERIOR DOORS ARE TO BE DETERMINED. STEEL AND FIBERGLASS WITH ALUMINUM CLAD JAMBS AND ADJUSTABLE SILLS.
 - 9) ATTIC ACCESS OPENING AS REQUIRED WILL BE DETERMINED ON SITE.

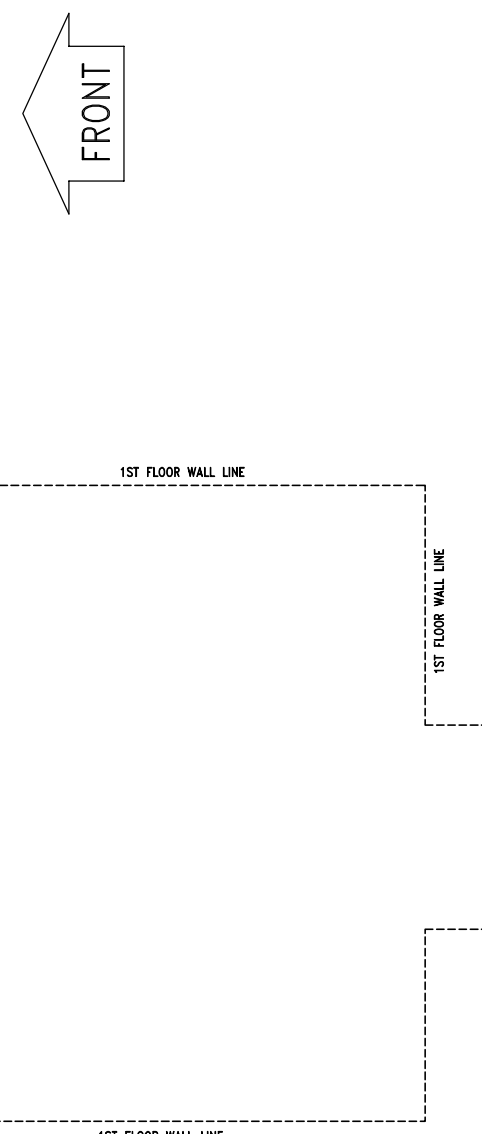
NOTE: ALL LVL HEADERS AND BEAMS ARE 3100/2.0 VERSA LAM

2522 SF
(AREA OF HOUSE FIRST FLOOR ONLY, DOES NOT INCLUDE GARAGE)



- ROOF INFORMATION:**
- 1) 8/12 ROOF PITCH OVER ENTIRE HOUSE AND GARAGE.
 - 2) 18" EAVE OVERHANG.
 - 3) 18" RAKE OVERHANG.
 - 4) 12" TO 24" RAKES AT HOUSE FRONT WHERE SHOWN.
 - 5) 12", 16", 25 3/16" AND 28" HEELS ON TRUSSES WHERE SHOWN.

ROOF PLAN
SCALE: 3/32"=1'-0"



NOTE: ALL LVL HEADERS AND BEAMS ARE 3100/2.0 VERSA LAM

1471 SF

(AREA OF HOUSE SECOND FLOOR ONLY, DOES NOT INCLUDE AREA OPEN TO FIRST FLOOR)
(INCLUDES STAIRWELL OPEN TO FIRST FLOOR)